

Open Loop Hall AC/DC Current Sensor CYHCS-S

This Hall Effect current sensor is based on open loop principle and designed with a high galvanic isolation between primary conductor and secondary circuit. It can be used for measurement of DC and AC current, pulse currents etc. The output of the transducer reflects the real wave of the current carrying conductor.

Product Characteristics	Applications
<ul style="list-style-type: none"> • Excellent accuracy • Very good linearity • Light in weight • Less power consumption • Window structure • Electrically isolating the output of the transducer from the current carrying conductor • No insertion loss • Current overload capability 	<ul style="list-style-type: none"> • Photovoltaic equipment • Frequency conversion timing equipment • Various power supply • Uninterruptible power supplies (UPS) • Electric welding machines • Transformer substation • Numerical controlled machine tools • Electric powered locomotive • Microcomputer monitoring • Electric power network monitoring

Electrical Data

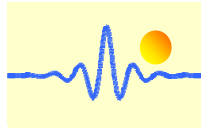
Primary Nominal Current I_r (A)	Measuring Range (A)	Output voltage (analog) (V)	Aperture Diameter (mm)	Part number
100	± 300	X=0: ±4V ±1.0% X=1: ±5V ±1.0%	Ø32	CYHCS-S100A-C-X
200	± 600			CYHCS-S200A-C-X
300	± 900			CYHCS-S300A-C-X
400	± 1200			CYHCS-S400A-C-X
500	± 1200			CYHCS-S500A-C-X
600	± 1200			CYHCS-S600A-C-X
800	± 1200			CYHCS-S800A-C-X
1000	± 1200			CYHCS-S1000A-C-X

(Connector: Molex connector C=M; Phoenix Connector: C=P)

Supply Voltage	$V_{cc} = \pm 15V \pm 5\%$,
Current Consumption	$I_c < 25mA$
Galvanic isolation, 50/60Hz, 1min:	3.0kV
Isolation resistance @ 500 VDC	> 500 MΩ

Accuracy and Dynamic performance data

Accuracy at I_r , $T_A=25^\circ C$ (without offset),	$E < 1.0\% FS$
Linearity from 0 to I_r , $T_A=25^\circ C$,	$E_L < 1.0\% FS$
Electric Offset Voltage, $T_A=25^\circ C$,	$V_{oe} < \pm 25mV$
Magnetic Offset Voltage ($I_r \rightarrow 0$)	$V_{om} < \pm 25mV$
Thermal Drift of Offset Voltage,	$V_{ot} < \pm 1.0mV/^\circ C$
Thermal Drift (-10°C to 50°C),	T.C. < ±0.1% /°C
Frequency bandwidth (- 3 dB),	DC - 20kHz
Response Time at 90% of I_P ($f=1k Hz$),	$t_r < 5\mu s$
Load resistance R_L ,	10kΩ
Standard:	Q/320115QHKJ01-2010

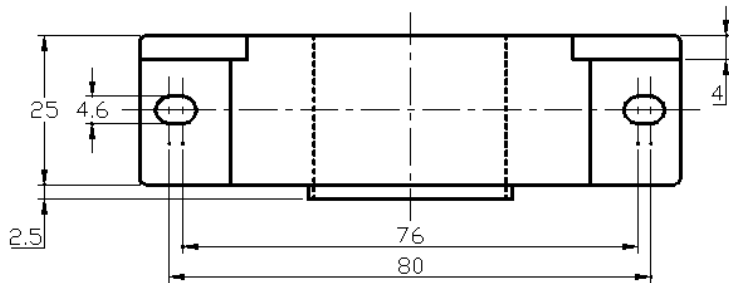
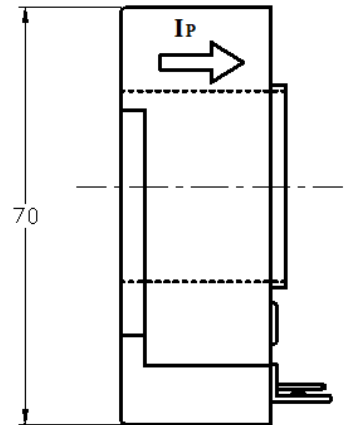
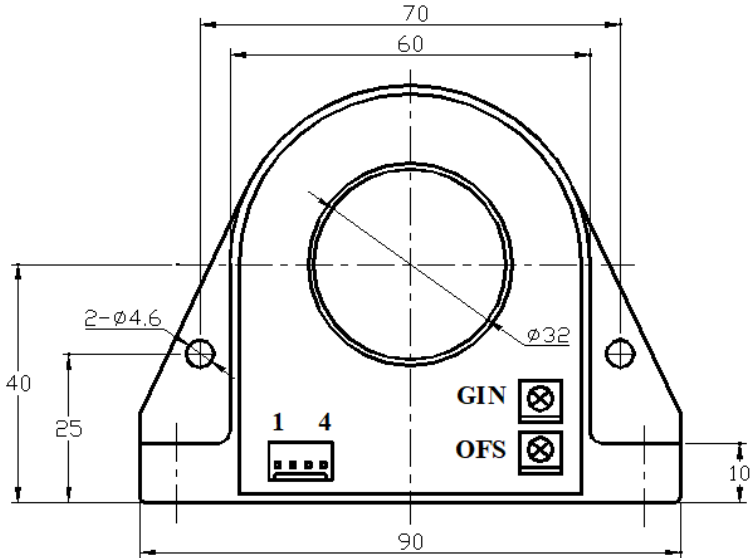


General Data

Ambient Operating Temperature,
Ambient Storage Temperature,
Unit weight:

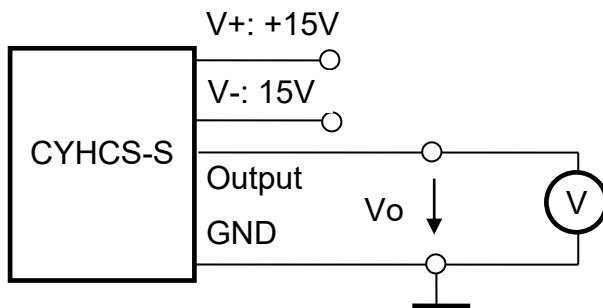
$T_A = -25^{\circ}\text{C} \sim +85^{\circ}\text{C}$
 $T_S = -40^{\circ}\text{C} \sim +100^{\circ}\text{C}$
250g

PIN Definition and Dimensions

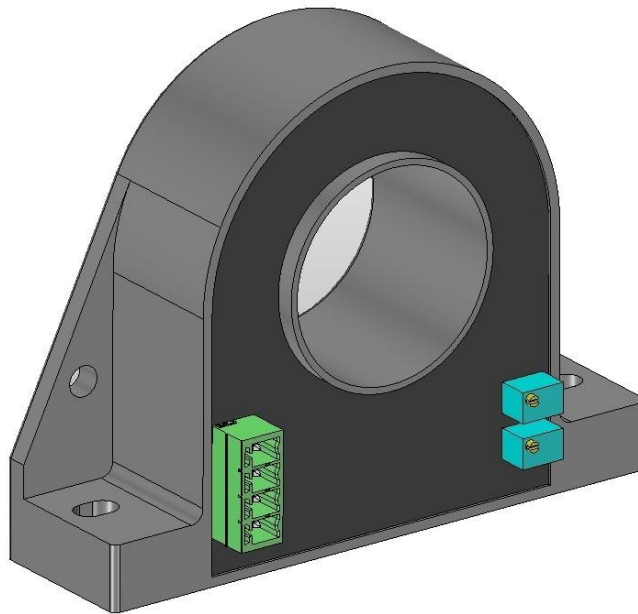
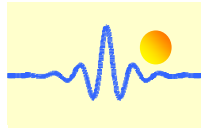


- 1: V+
- 2: V-
- 3: Output
- 4: Ground

GIN: Gain adjustment
OFS: Offset adjustment



Sensor with MOLEX connector



Sensor with Phoenix Connector

Notes:

1. Connect the terminals of power source, output respectively and correctly, never make wrong connection.
2. Two potentiometers can be adjusted, only, if necessary, by turning slowly to the required accuracy with a small screwdriver.
3. The best accuracy can be achieved when the window is fully filled with busbar (current carrying conductor).
4. The in-phase output can be obtained when the direction of current of current carrying conductor is the same as the direction of arrow marked on the transducer